



# 2016

## ANNUAL REPORT



### CHAIRPERSON'S AND CHIEF EXECUTIVE'S REPORT 2016

We are pleased to present the 28th Annual Report of the Otago Community Trust for the year ended 31 March 2016.

#### MAKING A DIFFERENCE

The Otago Community Trust is committed to ensuring Otago communities are strong, vibrant and caring of our people, environment, heritage and future.

Our origins lie in the Dunedin Savings Bank, established in 1864 by public spirited citizens of Otago who ensured a proportion of the Bank's profits were returned to the community. In 1988 the Government gave ownership of the Savings Bank to the Community Trust. The Trust eventually sold its shares to Trust Bank New Zealand, which was then on-sold to Westpac. Proceeds from the sale of Trust Bank New Zealand shares in the mid-1990s amounted to \$131m and the investment of these sale proceeds funds our donations to this day. Since our establishment in 1988 the Otago Community Trust has donated more than

\$141m across Otago. At 31 March 2016 our investment portfolio stood at \$265m.

During the year ended 31 March 2016 Trust funds returned 3.3% or \$7.4m. The Board remains committed to maintaining a disciplined approach to its investment portfolio, maintaining a relatively conservative strategic asset allocation.

Russell Investment Group Ltd continues to be the Trust's Investment Advisor.

#### DONATIONS FOR 2015 - 2016

In the 12 months to 31 March 2016, the Trust approved donations totalling \$6.2m. The Trust processed more than 400 applications from applicants from all over Otago. Recurring support included:

- \$393,000 for ongoing support to Otago's major social service agencies;
- \$900,000 for regional sport development programmes;
- \$400,000 for the Warm Homes Programme, to insulate another 516 Otago homes;
- \$90,000 to Outward Bound to enable one student from every Otago secondary school to attend its "Mind Body and Soul" course;
- \$70,000 to the Otago Medical Research Foundation;
- \$60,000 to the Dunedin Symphony Orchestra;
- \$50,000 for the Fortune Theatre Trust;
- \$50,000 to the Skeggs Foundation to assist volunteer coaches;
- \$50,000 for the Dunedin (NZ) Masters Games Trust;
- \$47,500 to the Dunedin Fringe Arts Trust;
- \$40,000 to the Otago Chamber of Commerce, to provide training courses for Not for Profits.

As well as recurring donations the Trust made a number of significant donations, namely:

- \$500,000 to Queenstown Lakes District Council - Wanaka Multi-Sports Complex;
- \$304,000 to Friends of Alps 2 Ocean Incorporated;
- \$280,000 to Central Otago Sports Turf Trust;
- \$250,000 to Community Health Trust - East Otago Health Centre;
- \$100,000 to St Patricks Basilica of South Dunedin.

#### THE COMING YEAR

Positive returns for the past couple of years have allowed us to maintain a strong donations budget for the people of Otago. The donations budget for the 2016-17 year has been set at \$6.0m.

The Trust continues its support of priority areas including Warm Homes, Rural Health Initiatives, Regionally Significant Cycle Ways and Youth Health and Wellbeing (focusing on employment, education and training).

#### OUR TEAM - TRUSTEES & STAFF

The Trust comprises 11 Trustees from throughout Otago. Appointed by the Associate Minister of Finance, the Trustees collectively hold a range of invaluable skills, experience and knowledge that guide the activities of the Trust. We thank all our Trustees for their commitment, enthusiasm and hard work. This year the Trust farewelled Ms Noeline Munro, an Investment Professional who had been with the Trust for eight years. Noeline's expertise and sound judgement in investment and finance have been invaluable and the careful consideration she brought to the Trust has been much appreciated. In July we welcomed Mr John Wilson to the Board. John is also an Investment Professional and we look forward to working with him in the future.

Trustees continue to be well supported by a small but dedicated team of staff who are always willing and able to assist community groups. This year the Trust experienced a staff restructure and we were pleased to welcome Mel and Teresa to the team. Our Team now comprises Barbara Bridger, Chief Executive, Carol Melville, Donations and Evaluation Manager, Sue Broome, Donations Advisor and Office Manager, Mel McAtamney, Marketing and Communications Coordinator and Teresa Christie, Administration Officer.

We continue to strive to fulfil our mission to responsibly manage and wisely share Trust resources which have been entrusted to us. The Trust looks forward to working with members of the community on a wide range of projects in the year to come.

**Ross McRobie**, Chairperson

**Barbara Bridger**, Chief Executive

### NOTICE OF ANNUAL PUBLIC MEETING

The 28th Annual Public Meeting of the Otago Community Trust is to be held on Tuesday, 23rd August 2016 at 4.30pm at the Barclay Theatre, Otago Museum, 419 Great King Street, Dunedin.

#### BUSINESS:

To report on the operations of the Trust for the financial year ending 31 March 2016 and on the financial statements of the Trust for that year.

#### CONTACT:

**Barbara Bridger**, Chief Executive  
PO Box 5751, Dunedin 9058.  
Ph: 03 479 0994 or 0800 10 12 40  
[info@oct.org.nz](mailto:info@oct.org.nz), [oct.org.nz](http://oct.org.nz)





In 2013 the Otago Community Trust Board agreed to commit a percentage of the Trust's annual donation budget to pro-actively support initiatives that make a significant difference to the wellbeing of the Otago community. The Trust refers to this as its Funding for Change Priorities.

## YOUTH, HEALTH AND WELLBEING

Youth, Health and Wellbeing is a particularly important Funding for Change priority for the Otago Community Trust. Investment in this area literally has the ability to change the lives of our young people. Under this Funding for Change priority the Otago Community Trust focuses support on initiatives in Education, Employment and Training.

For the year ended 31 March 2016 we have funded a number of initiatives in this space. We are particularly proud to see our investment in Outward Bound

scholarships to Otago secondary school students reach more than \$1 million.

Furthermore, we are pleased to be once again supporting a Community Employment Youth Initiative which provides youth job-seekers (aged 18 to 24) currently registered with the Ministry of Social Development who have little or no prior work experience an opportunity to gain six months job experience. This work placement is funded by the Otago Community Trust and Work and Income.

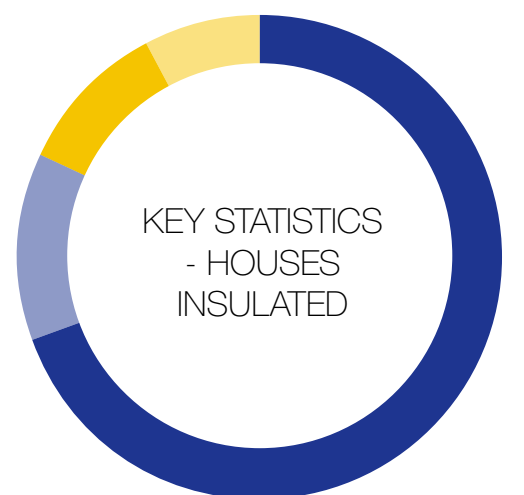


Kris Collins working at Dunedin Council of Social Services.



Since 2013, the Otago Community Trust has worked with the Energy Efficiency and Conservation Authority (EECA) to help fund free insulation into qualifying households. To date our investment into Warm Homes for Otago has exceeded \$1 million. The project has attracted almost \$5 million into the Otago region from all funders involved in OCT's Warm Home programmes. Working with local insulation companies Smart Energy Solutions and Technobond, over 1553 houses in Dunedin and across Otago have been insulated to date.

Our commitment to Warm Homes will not change in 2016/17, however new funding criteria have come into effect as a result of the 2016 National Government Budget. This will see Government funding focus on rental properties only.



- Dunedin – 1079
- North Otago – 197
- South Otago – 159
- Central Otago – 118

## RURAL HEALTH

There are a number of issues facing the Otago Region from a rural health perspective. Rural health providers across Otago increasingly have to deliver services differently to more traditional models of care with increasing use of others to support rural health care delivery. As a result the Otago Community Trust supports telehealth (connecting remote locations with Specialists in urban areas), health education opportunities, equipment, upgrading and redesign of rural medical facilities and access to

medical services in rural areas under this Funding for Change priority.

Our significant investment in Rural Health for the year ended 31 March 2016 included a \$250,000 donation towards the East Otago Community Health Trust, in support of the East Otago community's new medical centre.

The Trust was also pleased to support eight registrations for rural health practitioners across Otago to attend the 2016 National Rural Health Conference.



photo: New Zealand Rural General Practice Network

## REGIONALLY SIGNIFICANT CYCLE WAYS

The Otago Community Trust has supported the region's cycle ways for many years in recognition that the cycle ways provide employment opportunities and economic benefits to the local communities they serve. The Trust has supported the Central Otago Rail Trail and more recently the Alps 2 Ocean Cycleway with significant donations to

further develop the trails and in particular the off road trail sections.

In May 2016 the Otago Community Trust was delighted to announce it would in principle invest \$2 million along with the New Zealand Government (\$13m) and the Central Lakes Trust (\$11.5m) to create a 536km continuous cycle trail to connect Central Otago's trail network.



photo: Bennett & Slater





## RECIPIENTS ART & CULTURE

### CELEBRATING OUR DIVERSITY - RACE RELATIONS DAY

Working in partnership with Safer Waitaki, the Waitaki Multicultural Council and Zonta were proud to develop a programme for the Race Relations Concert at the Oamaru Opera House in March. Each year, a different theme is promoted around harmonious race relations and this year's theme was "It's About Us - Whanau".

Of particular note was the performance of 40 Maori and Pasifika students under the tutelage of Sela Faletolu from Ara Institute of Canterbury. The students were from Waitaki Girl's High School, Waitaki

Boy's High School and St Kevin's College. They portrayed a powerful representation of the issues affecting young people in our community. This included violence, suicide, drugs and grief. A very compelling message delivered in an innovative way. Treasurer Sandra Tonkin said "thank you to our supporters - Etu Whanau, Otago Community Trust and Creative Communities NZ who have enabled our communities to take responsibility and action to create positive changes to promote safer and violence free communities."



photo: Carol Edwards.

### MAGICAL WINTERS EVENING



photo: Alan Dove Photography

The Mid-Winter Carnival is an annual event which celebrates our local seasons. It takes place on the Saturday closest to the Winter Solstice in Dunedin's Octagon.

The Otago Community Trust is pleased to be an ongoing supporter of the Midwinter Carnival. Barbara Bridger, Chief Executive of the Otago Community Trust said "people love the event and look forward to seeing what the Carnival Art Team produce each year". The 2015 event attracted the largest procession of performers in the history of the Dunedin Midwinter Carnival. The procession involved approximately 1000 people, including local families who made their own lanterns at pre-festival workshops.

Dunedin Midwinter Carnival artistic director Juliet Novena Sorrel said "the 'Winter Garden' theme was always going to be popular with some beautiful flowers but the Art Team out-did themselves with more illuminated costumes, more articulated costumes and more performers than ever before".



photo: Oh Three Photography

### ASPIRING CONVERSATIONS 2016

Aspiring Conversations was held in April with over 2,500 tickets sold over the nine panel sessions. Southern Lakes Art Festival Director, Philip Tremewan said there was a clear and growing demand for this type of event in New Zealand. "The audience response has been fantastic. People have engaged with the issues and ideas raised and the discussions have continued long after each session has ended," he said.

The Otago Community Trust was pleased to once again provide funding support to Aspiring Conversations, an event that is growing from strength to strength, providing opportunities to explore issues at depth, hear differing views, and to engage with new ideas.

### SCIENCE TELLER - SAVAGE TRUTHS

ScienceTeller is a biennial event, run by the University of Otago's Centre for Science Communication. Established in 2008, the centre is the second largest Science Communication programme in the world.

The Otago Community Trust provided funding towards the event that was made open to the public for the first time in its history in 2015. The event communicates the fascinating work of Otago's top researchers to the Dunedin community in an interesting and accessible way. The theme for 2015 was Sex and Science and covered important subjects such as sexual orientation, sexual consent, the effects of alcohol on sexual behaviour,

and the relationships between mental health and sex.

Noted American sex columnist Dan Savage was the keynote speaker for the three-day event. Festival organiser and science writer Associate Professor Jesse Bering said it was a "tremendous coup" for organisers to bring Mr Savage to Dunedin.



for more stories visit [oct.org.nz](http://oct.org.nz)

#### DONATIONS

Alexandra Musical Society	8,500
Anna and John Caselberg Trust	15,000
Aotearoa Peace & Conflicts Trust	4,000
Arts On Tour NZ	5,000
Australian and New Zealand College of Organists	800
Central Coast Country Music Assn Inc	600
Central Otago Dance Development	1,000
Central Otago District Arts Trust	5,000
Central Otago Regional Choir	5,000
Chairpersons Fund (NZ Young Shakespeare Coy)	1,000
Chamber Music New Zealand Trust	6,000
Collegiate Orchestra	450
Connected Media Charitable Trust	3,500
Dunedin Choral Society	4,000
Dunedin City Council - Puaka	
Matariki Celebrations	5,000
Dunedin City Jazz Orchestra Inc	1,000

Dunedin Civic Orchestra Inc - t/a Dunedin Symphony Orchestra	60,000
Dunedin Fringe Arts Trust	47,500
Dunedin Harmony Chorus Inc	500
Dunedin Jazz Cabaret & Performing Arts Trust	4,500
Dunedin Medieval Society Inc	600
Dunedin Midwinter Celebrations Trust	8,000
Dunedin Opera Company t/a Opera Otago	8,000
Dunedin Public Art Gallery Society Inc	25,000
Dunedin Returned Services Choir	2,500
Dunedin Street Art Charitable Trust	7,500
Dunedin Tap Dancing Society	5,500
Dunedin Theatre Reviewers Collective	300
Dunedin Youth Orchestra Inc	4,000
Fine Thyme Theatre Company	3,700
Fortune Theatre Trust	50,000
Indian Ink Trust	3,500
Kaikorai Metropolitan Brass Inc	800
Kiribati Waipounamu Inc	1,500
Musical Theatre Dunedin Inc	35,000
Musical Theatre Oamaru	15,000

New Zealand Symphony Orchestra Foundation	1,500
NZ Choral Federation - Otago Region	2,500
NZ Mountain Film Festival Charitable Trust	5,000
NZ Oamaru Live Stone Art Inc	3,500
Oamaru Tap Dancing Assn	1,000
Otago Festival of the Arts Trust	175,000
Otago Potters Group Incorporated	1,000
Otago Secondary Schools Music Festival Society Inc	1,500
Otago Symphonic Band Inc	300
Regent Theatre Trust of Otago	6,700
Royal New Zealand Ballet	15,000
Shakespeare Globe Centre New Zealand	750
Show Me Shorts Film Festival Trust	1,200
Southern Lakes Arts Festival Trust	5,000
Southern Youth Choir	2,500
Spring Chamber Music	1,000
Stage Challenge Foundation	5,000
Stageworks Otago Inc	2,500
Storylines Childrens Literature	

Charitable Trust of NZ	3,500
Taiari Dramatic Society Inc	2,500
Taiari Musical Society Inc	4,000
Talking House Charitable Trust	3,237
The Dunedin Writers and Readers Festival Trust	4,000
The NZ International Early Music Festival Trust	4,000
The Otago Early Childhood & Schools	
Maori & Pacific Island Festival Trust	10,000
The University Of Otago - Science Teller	5,000
University of Otago - Dance Studies	1,500
University of Otago - Dept of Music	1,500
Waitaki Multicultural Council Inc	1,000
Waitaki Summer Music Camp	2,000
Waitaki Tourism Association	5,000
Wanaka Community Trust	2,500
Wellington Independent Arts Trust - Letting Space	3,500
West Harbour Arts Charitable Trust	1,000
WOW! Productions Trust	15,000

**\$649,437**





## RECIPIENTS LEARNING

## DIVING INTO MARINE EDUCATION



The Otago Community Trust was pleased to assist with the cost of delivering an Experiencing Marine Reserves (EMR) programme to Otago schools, in particular the purchase of diving equipment in 2015.

Otago is one of the latest regions to adopt the programme under Andrew Pennikets' co-ordination, despite not having a Marine Reserve. The focus of the Otago programme is to provide the equipment and expertise for a hands-on learning experience in the ocean. King's High School was the first school in Otago to receive the EMR marine education package.

"The EMR programme simply introduces kids to their local seas through classroom sessions and actually getting wet looking at fish and kelp. Otago has one of the wildest coasts in the country so most people don't know just what's down there but we aim to give them a taste. The fins, boots, hoods, gloves and other snorkel equipment funded by OCT kept the participants warm and safe and contributed to some great experiences. The kids were very grateful!" Andrew Pennikets said.

## OUTWARD BOUND INVESTMENT HITS \$1M

Since 2002, the Otago Community Trust has sponsored, on an annual basis, partial scholarships for at least one student in each of the 25 participating secondary schools in Otago, to attend Outward Bound. The partnership has seen over 650 students attend the Outward Bound Mind Body Soul course. There is strong support for the initiative from schools, who have seen

their students experience huge personal growth, often stepping up as leaders in their community. The Otago Community Trust is delighted to report that its investment has now reached over \$1M.

*"This opportunity you have given me has allowed me to experience things that I would never be able to and has also allowed me to grow as a person."*

Jessie Scurr, 2015 recipient, EOHS.



## LIFE EDUCATION TRUST COASTAL OTAGO



Life Education is a charity that provides children with the knowledge to make informed choices about their health, respect others and learn to appreciate their uniqueness. The Otago Community Trust is pleased to be a long-time supporter of Life Education Otago.

Operating from Dunedin to the Waitaki Valley

since 1996, the programme in 2015 was delivered to over 4,600 children throughout 46 Otago primary and intermediate schools. The distinctive tall figure of Harold the Giraffe is a welcoming symbol on the mobile classroom transported to and from each school.

The mobile classrooms that are fitted with specialist tools and resources capture the imagination of the students and enhance the impact of the learning during each students' visit. Specialist educators, who are all registered teachers, bring the programme to life with the much loved side-kick and mascot Harold the Giraffe.

## TURNING POINT BRIDGE PROGRAMME

The Otago Community Trust assisted with a youth development programme to help senior secondary students (Year 12 and 13) in making clear, confident and well informed decisions upon leaving school.

A major grant from the Otago Community Trust enabled the Turning Point Bridge programme to reach hundreds more young people throughout Otago in 2015. Teaming up with Otago Secondary Schools and Otago Polytechnic the programme was able to benefit students throughout Otago.

Michael Simmons, Training Coordinator at Otago Polytechnic highlights that

the "feedback from students has been consistently outstanding. Turning Point Bridge combines personal development skills and business experience with up-to-date industry and career information, [and] is a unique course in high demand that is making a positive difference in the lives of many teenagers throughout Otago".



for more stories visit [oct.org.nz](http://oct.org.nz)

### DONATIONS

Abbotsford School	127
Arthur Street School	965
Balacava School	210
Balclutha Primary School	405
Balmacewen Intermediate School	90
Bathgate Park School	3,718
Bayfield High School	530
Big Rock Primary School	2,000
Bradford Primary School	360
Broad Bay School	300
Brockville School	4,150
Carisbrook School	3,020
Chairpersons Fund (Shakespeare Globe Co)	1,500
Clutha Valley Primary School	580
Clyde Primary School	328
Community Colleges NZ Ltd	2,000
Concord School	880
Corstorphine Kindergarten	600
Cromwell Primary School	266
Dunedin Fringe Arts Trust	7,500
Dunedin North Intermediate School	880
Dunstan High School	1,020
East Otago High School	1,025
East Taieri School	3,000
Elmgrove School	2,330
Fairfield School	840

Flag Swamp School	200
George Street Normal School	51,032
Goldfields School	110
Grants Braes School	150
Green Island School	7,720
Halfway Bush Kindergarten	2,200
Halfway Bush Primary School	1,520
Hawea Flat School	120
Hawea Kindergarten	3,500
Holy Family School	250
Kaikorai Kindergarten	5,000
Kaikorai Primary School	85
Kaikorai Valley College	2,770
Kakanui School	1,200
Kavanagh College	2,280
Kelsey Yaralla Kindergarten	11,147
King's High School	66,375
Life Education Trust Coastal Otago	11,800
Literacy North Otago Inc	30,000
Logan Park High School	4,870
Macandrew Bay School	32,000
Maheno School	1,844
Maniototo Area School	140
Maori Hill School	2,200
Milton Kindergarten	800
Morrington School	800
Mt Aspiring Outdoor Education Centre	1,000
Mountains to Sea Conservation Trust	3,480

Mt Aspiring College	7,260
New Zealand Python User Group	5,000
Oamaru Intermediate School	815
Oho Mauri Oho Ake Charitable Trust	5,000
Otago Boys High School	1,400
Otago Girls High School	3,180
Otago Medical Research Foundation	70,000
Otago Polytechnic - Dunedin	
School of Art	750
Otago Polytechnic - Pacific	
Island Scholarships	7,500
Otago Polytechnic - Turning Point Bridge	30,000
Outward Bound	90,000
Papakao School	670
Pine Hill School	1,400
Poolburn School	5,034
Port Chalmers School	30
Portobello School	550
Queens High Preschool	6,000
Queens High School	2,865
Ravensbourne School	320
REAP - Central Otago	6,000
Rosebank Primary School	1,770
Sawyers Bay School	720
Silverstream School	610
South Otago High School	144
St Brigids School	270
St Clair School	260

St Gerard's School	10,410
St Joseph's School - Oamaru	7,600
St Josephs School - Port Chalmers	680
St Leonards School	325
St Marys School - Mosgiel	295
St Marys School Kaikorai	7,000
St Mary's School Milton	400
St Peter Chanel School	960
Strath Taieri School	140
Tahuna Normal Intermediate School	790
Taieri College	9,195
Tainui School	2,100
The Parenting Place - Attitude Division	6,000
The Terrace School	3,395
Tokomairiro Early Learning Centre	2,500
University of Otago - Business School	10,000
University of Otago - Division of Sciences	3,000
Untouched World Charitable Trust	5,000
Waiholo District School	600
Waikouaiti School	4,515
Waitaki Boys High School	29,054
Waitati School	400
Wakari School	6,240
Warepa School	10,100
Warrington Primary School	5,840
Wellington Museums Trust	2,500

659,804





## PROGRAMME INCUBATOR

The Southern DHB's Programme Incubator is a wonderful programme extending unique knowledge and experience to Otago youth. Programme Incubator is a coordinated programme providing in-depth information on health employment and career pathways to Otago secondary school students from years 11-13.

The programme's success lies in the commitment and time Southern DHB team members put into the programme. Taking time out of their already busy schedules, these health professionals do an outstanding job of sharing their first-hand knowledge and experience with the students. The great benefit to students is that it provides real insight into the diverse range of career pathways available in the

health sector. The Otago Community Trust is pleased to provide funding support to this great programme.

This initiative has been running in Otago now for two years and has received wonderful feedback from participating students.

*"We practically saw how treatment happens. It was so good to get the knowledge about new things".*

*"I really enjoyed watching the surgery on the heart and finding out about the different jobs".*

*"Love it, was so interesting"*

*2015 Programme Incubator recipients*

## RECIPIENTS COMMUNITY

### POOL UPGRADES

The Otago Community Trust was delighted to be able to support a number of schools with funding support towards swimming pool upgrades over the last financial year. Warrington and Macandrew Bay Schools both successfully embarked on fundraising for their respective pool upgrades.

Each of the schools play an integral role in their community and are very excited about having their pools back and operational for the 2016 summer season.

Macandrew Bay School Principal Bernadette Newlands said "The school, the immediate Macandrew Bay community and wider Otago Peninsula community will all benefit from the pool remaining open and refurbished."

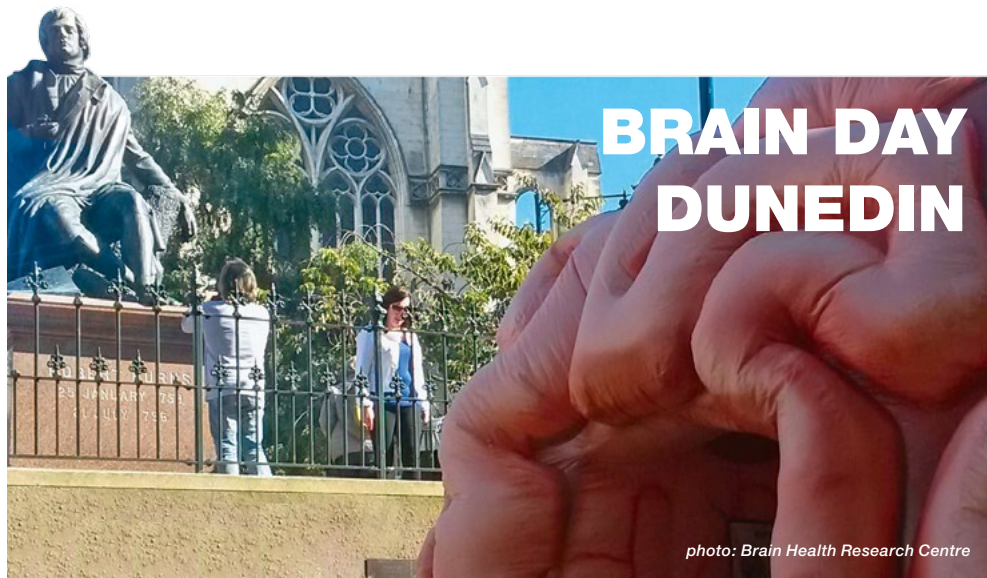
## OWAKA WAKA & 150TH CELEBRATIONS



The Owaka community celebrated the 150th anniversary of European settlement to the area in early January 2016. The community hosted a four day celebration acknowledging the vast changes the district has seen in that time.

The celebrations started with an official opening in the Owaka Community Centre, followed by the unveiling of the new town structure "The Waka". The four day celebration had plenty to entertain both young and old, with an old fashioned sports day, film footage from the past, historical tours, the 150th Shipwreck Ball, a beard growing competition and much, much more.

Convenor, Anne-Marie Holland said that the anniversary celebrations were "absolutely fantastic, they exceeded our expectations, we were thrilled with the result". The Otago Community Trust congratulates the committee of the Owaka 150th Celebrations and the wider Owaka and Catlin's community for the great success of this community event.



The Neurological Foundation, in partnership with the University of Otago hosted Brain Day Dunedin during Brain Awareness Week in March. The Otago Community Trust was proud to support the Neurological Foundation with funding to support Brain Day Dunedin. Specifically the presentation series "Research on the brain: A day with our Professors", a highly regarded series of public lectures, interactive displays and community group stands.

The aim of Brain Day Dunedin is to inform and educate the public, particularly the ageing and elderly, and those with neurological conditions, about the importance of maintaining brain health.

 **OTAGO**  
Community Trust  
for more stories visit [oct.org.nz](http://oct.org.nz)

#### DONATIONS

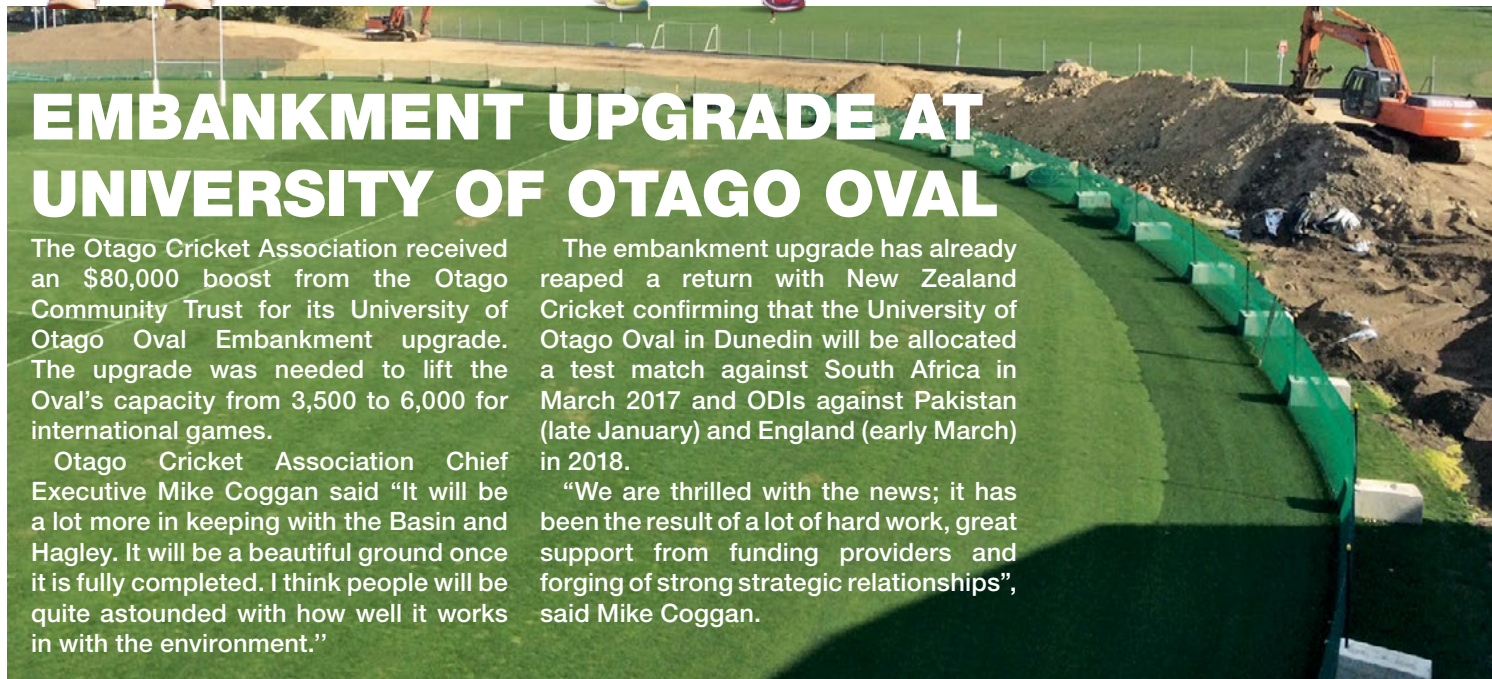
Acts of Kindness Charitable Trust	6,000	Dunedin Curtain Bank Trust	8,000	Oamaru Pacific Island Community Inc	1,000	Scout Assn - St Patricks	
Age Concern Otago Inc	12,000	Dunedin Friend-Link Trust	5,000	Operation New Direction Trust	5,500	Scout Group - Dunedin	7,500
Alexandra Blossom Festival Inc	3,000	Dunedin Poultry, Pigeon & Cage Bird Club	300	Otago Accommodation Trust	3,000	Smart Energy Solutions - Warm Homes	250,000
Alexandra Community Wheelchair		Dunedin Pride Organising Committee 2013	500	Otago Chamber of Commerce	40,000	South Otago Agricultural & Pastoral Soc	3,000
Van Group Inc	18,000	Dunedin Returned And Services Assn Inc	3,000	Otago Community Hospice Trust	4,000	Southern District Health Board	2,500
Alexandra Senior Citizens Centre Inc	2,900	Dunedin Riding for the Disabled	2,600	Otago Diabetes Research Trust	3,000	Stopping Violence Dunedin Inc	18,000
Alpine Community Development Trust	1,280	Dunedin Santa Parade Trust	20,000	Otago Justices of the Peace Assn	3,600	Strath Taieri Agriculture & Rural	
Amputee Society of Otago & Southland Inc	500	Dunedin Senior Chinese Assn	1,900	Otago Malaysian Students' Association (OMSA)	1,000	Tourism Trust	13,000
Anglican Family Care	50,000	East Otago Community Health Trust	250,000	Otago Mental Health Support Trust	1,500	Taieri Christian Care Trust	5,000
Autism New Zealand - Otago Branch	1,750	Ellis Fibre - Warm Homes	192,500	Otago Outdoor Education Camp Trust	20,000	TalkLink Trust	2,500
Carers Society Otago	10,000	For Trades Apprenticeship Training Trust	22,000	Otago Therapeutic Pool Trust	300,000	Tangata Whenua Community	
Catholic Social Services	41,100	Friendly Bay Railway Bridge Restoration Trust	3,000	Otago Youth Wellness Trust	50,000	& Voluntary Sector Research Centre	7,000
Catlins Coast Inc	1,000	Girl Guides Association NZ Inc - Peninsula District	1,100	Our Hut Tahakopa Committee	1,500	Te Hou Ora Otepoti Inc	4,000
Catlins Promotions Inc	14,000	Girl Guiding NZ - Western Hills District Jamboree	1,800	Owaka 150th Celebrations	1,000	Te Whare Pora - The Weaving House	2,500
Caversham Baptist Church	1,300	Fundraising	1,800	Pregnancy Counselling Services Inc	1,000	Te Whare Pounamu Dunedin	
CCS Disability Action Otago Inc	12,000	Grow NZ Inc - Dunedin Grow Centre	500	Pregnancy Help Incorporated	1,500	Womens Refuge Inc	28,000
CCS Disability Action Waitaki Inc	5,000	iD Dunedin Fashion Inc Soc	15,000	Presbyterian Support Otago	55,000	The Brain Injury Assn (Otago) Inc	400
Central Cinema Inc	2,500	IHC NZ Inc	2,500	Public Health Association - Otago/Southland Branch	4,000	The Neurological Foundation of NZ	2,000
Central Otago A & P Association	3,500	Institute for Child Protection Studies	5,000	Puketapu Radio Charitable Trust	750	Tuvalu Community	150
Centre for Science and Citizenship	1,000	Jennys Companionship Group Inc	3,500	Queenstown Lakes District Council - Summerdaze Festival	5,000	University of Otago - Volunteer Centre	5,000
Chairpersons Fund (Samoan Students Assn)	750	Kaikorai Grays Sport & Travel Inc	1,500	Rape Crisis Dunedin Inc	500	Vision Port Chalmers	10,000
Citizens Advice Bureau - Dunedin	10,000	Keep Dunedin Beautiful Committee	2,000	RMH Auckland Trust	3,500	Volunteering Otago Trust	7,000
Citizens Advice Bureau - North Otago	3,500	Lake Hawea Community Centre Inc	1,000	Romahapa Hall Society Inc	8,000	Waitaki Multicultural Council Inc	3,000
Clutha District Council - Aspiring Leaders	1,731	Malcam Charitable Trust	50,000	Roslyn Scout Group	1,100	Waitaki Resource Recovery Trust	3,000
Community Employment	57,525	Methodist Mission Southern	53,500	Royal NZ Foundation of the Blind	10,000	Waitaki Woodturners Guild Inc	1,200
Connections Education & Development Trust	3,000	Mosgiel Abilities Resource Centre Inc	13,700	Saddle Hill Foundation Trust	10,000	Waitati-e!	1,000
Cosy Homes Charitable Trust	14,965	Mosgiel Business Association Inc	405	Salvation Army Dunedin City Corp	5,000	Wanaka Search and Rescue	15,000
Disability Information Service	5,000	New Zealand Red Cross Inc	7,500	Salvation Army New Zealand Trust	35,000	WellSouth Primary Health Network	2,215
Disabled Citizens Soc (Otago) Inc	5,000	Ngai Tahu Maori Law Centre	3,000	Schizophrenia Fellowship Otago Branch Inc	30,000	West Dunedin Youth and Community Trust	8,000
Dunedin City Council - New Year	2,500	North Otago Scottish Soc Inc	3,200			Youthline Otago Inc	15,000
Dunedin Community Care Trust	4,000	Oamaru Combined Churches - Outreach	1,000				
Dunedin Council of Social Services Inc	2,000						

**1,998,221**





## RECIPIENTS SPORT & RECREATION



### EMBANKMENT UPGRADE AT UNIVERSITY OF OTAGO OVAL

The Otago Cricket Association received an \$80,000 boost from the Otago Community Trust for its University of Otago Oval Embankment upgrade. The upgrade was needed to lift the Oval's capacity from 3,500 to 6,000 for international games.

Otago Cricket Association Chief Executive Mike Coggan said "It will be a lot more in keeping with the Basin and Hagley. It will be a beautiful ground once it is fully completed. I think people will be quite astounded with how well it works in with the environment."

The embankment upgrade has already reaped a return with New Zealand Cricket confirming that the University of Otago Oval in Dunedin will be allocated a test match against South Africa in March 2017 and ODIs against Pakistan (late January) and England (early March) in 2018.

"We are thrilled with the news; it has been the result of a lot of hard work, great support from funding providers and forging of strong strategic relationships", said Mike Coggan.

## FUTURE TRIATHLETES

The Otago Community Trust is pleased to be an ongoing funding supporter of the Oamaru Multisport Club. The club is in its 31st year of operation and continues to do an outstanding job of holding the annual Oamaru Triathlon and Duathlon. Greater significance was placed upon the popular event this year, as it also featured a selection race for the ITU sprint world age-group championships. The ITU selection triathlon and the non-selection triathlon involved a 750m swim, 20km cycle and 5km run.

"It certainly was a bit bigger this year because of the ITU selection race," long-serving organiser Adair Craik said. However, it still remains "a real family-focused event and offers something for young people and the older ones. You can come and have a go and you don't need to be a brilliant triathlete to be part of it".



## SALMON SMOLT ON THE MOVE

The Otago Community Trust over the last 5+ years has made an annual donation to support the NZ Salmon Anglers Association - Otago Branch.

Members of the Otago Branch and a group of very dedicated volunteers release approximately 30,000 salmon smolt in late May or early June each year. The May/June release is chosen because there are few natural predators in the harbour at this time of year. The locally reared smolt are released at various points in the Water of Leith and Lindsay Creek taking the best part of a day. This commitment and dedication, ensures salmon stocks in the Otago Harbour are kept high.

Branch Treasurer, Peter Coory explains how Dunedin has a unique salmon situation because throughout the South Island the smolt mainly go from rivers to

the ocean. "In Dunedin they go from rivers to the harbour to the ocean, so we need to protect that. Dunedin is one of the only places in New Zealand that release smolt in this manner".



## "OLYMPIC GRADE" HOCKEY TURF FOR CROMWELL

A new "Olympic grade" hockey turf servicing Central Otago and Lakes District was officially unveiled in Cromwell, in April. The surface is the same as that used for the 2016 Summer Games. Named the Pioneer Energy Turf, the new turf cost between \$700,000 and \$800,000 and was part of a larger \$1.7 million renovation undertaken by the Central Otago Sports Turf Trust.

The new turf acts as a home ground for teams throughout the Central Otago/Lakes District. Central Trust Chairman Michael Paardekooper said the new surface made the game "much more skilful". The Otago Community Trust was pleased to provide funding for this new facility that will be an asset for the sporting community in Central Otago for many years to come.



DONATIONS			
Awamoa Football Club	2,000	East Otago Woodturners Inc	500
Awamoa Gardens Croquet Club	1,000	Excelsior Rugby & Assoc Sports Club	1,000
Balmacewen Tennis Club Inc	10,000	Fire in Ice Outrigger Canoe Club Inc	1,000
Basketball Otago Inc	49,500	Football South	66,000
Carisbrook Dunedin Cricket Club	1,000	Forbury Park Bowling Club	4,500
Cavalcade Host Town Comm Inc	5,000	Green Island Rugby Football Club	10,000
Caversham Harrier & Athletic Club Inc	65,000	GymSports NZ - Southern Region	5,500
Central Otago Hockey Assn	6,600	Hawea Bowling Club Incorporated	3,500
Central Otago Softball Assn	8,250	Hockey New Zealand	7,500
Central Otago Sports Turf Trust	280,000	John McGlashan College	10,000
Challenge Wanaka Sports Trust	10,000	Kaikorai Metropolitan Brass Inc	2,000
Clyde Bowling Club	5,000	Kiwi Swim Club Inc	1,000
Cromwell Community Squash Club	25,000	Kurow Rugby Football Club - Squash Club	2,000
Dressage Otago	2,000	Lower Waitaki Golf Club Inc	7,000
Dunedin (NZ) Masters Games Trust	50,000	Maniototo Rodeo Club Incorporated	6,000
Dunedin City Council - South		Momona Hockey Club	150
Dunedin Cycling Project	10,000	Mosgies Piping and Dancing Society	415
Dunedin City Petanque Inc	35,000	Mountainbiking Otago Inc	25,000
Dunedin Ice Hockey Association	2,500	Netball South Zone Inc	110,000
Dunedin Ice Skating Club Inc	11,000	North Otago Rugby Football Union Inc	22,000
Dunedin Indoor Sports Venues Trust	45,000	North Otago Scout Zone	5,000
Dunstan High School	8,000	NZ Curling Assn Inc	8,250
East Otago Social Bridge Club	500	NZ Salmon Anglers Assn Otago Branch	4,000
		Oamaru Athletic Marist Rugby	
		Football Club	5,000
		Oamaru Multisport Club	2,000
		Oamaru Rowing Club	600
		Onyx Militaires Marching Team	537
		Otago Academy of Sport	30,000
		Otago Aero Club Inc	7,000
		Otago Badminton Assn Inc	16,500
		Otago Bridge Club	5,000
		Otago Canine Training Club	400
		Otago Cricket Assn Inc	140,500
		Otago Hockey Association	44,000
		Otago Rowing Assn Inc	27,500
		Otago Rugby Football Union Inc	55,000
		Otago Rugby League Inc	16,500
		Otago Secondary Schools Sports Assn	28,000
		Otago Softball Assn Inc	16,500
		Otago Sports Car Club Inc	25,000
		Otago Synchronised Swimming Club	4,400
		Otago Table Tennis Assn Inc	2,900
		Otago Touch Assn Inc	27,500
		Otago Yachting Assn Inc	7,500
		Parafed Otago	20,000
		Port Chalmers Rowing Club	10,000
		Project Litefoot Trust	30,838
		Queenstown Lakes District Council -	
		Wanaka Multi-Sports Complex	500,000
		Royal NZ Pipe Band Assoc - Otago Centre	1,200
		Skeggs Foundation	50,000
		Snow Sports NZ Inc	38,500
		Sport Central	22,000
		Sport Clutha	22,000
		Sport Otago - Coachforce Athletics	27,500
		Sport Otago - Coachforce Golf	27,500
		Sport Otago - Community Coach Advisor	27,500
		Sport Otago - Fundamental Skills	8,250
		Sport Otago - Sport Development	25,000
		Sport Waitaki	22,000
		Squash Otago Inc	27,500
		St Clair Golf Club Inc	8,000
		Surf Life Saving New Zealand Inc	36,500
		Swimming New Zealand	15,000
		Taieri Tennis Club Incorporated	2,000
		The Otago Golf Club Inc	9,000
		Tokarahi Golf Club	6,000
		Wanaka Golf Club Inc	6,000
		Wanaka Gun Club Inc	6,200
		West Taieri Rugby Football Club	1,000
			2,346,490





# RECIPIENTS HERITAGE & ENVIRONMENT

## DIAMOND LAKE NATIVE HABITAT RESTORATION

The Otago Community Trust was pleased to assist the Te Kakano Aotearoa Trust with the cost of the purchase, planting and maintenance of 1200 native plants at Diamond Lake Conservation Area near Wanaka. Since establishment of the Trust in 2007, Te Kakano has put into the ground over 15,000 plants around the tracks, trails and reserves of the Upper Clutha and recorded nearly 10,000 hours of volunteer time in the nursery and at planting sites.

Te Kakano collects seeds from local areas, with permission from the

Department of Conservation, and grows them at a community-based nursery. The Diamond Lake Native Habitat Restoration project ensures native biodiversity is increased, habitat for native wildlife (insects, frogs, reptiles and birds) is created and water quality and landscapes are enhanced, alongside providing a sense of place and identity. The great benefit of the restoration project is that it will be enjoyed by current and future generations of both locals and visitors to the area.



## INTERNATIONAL FESTIVAL OF HISTORIC MOTORING

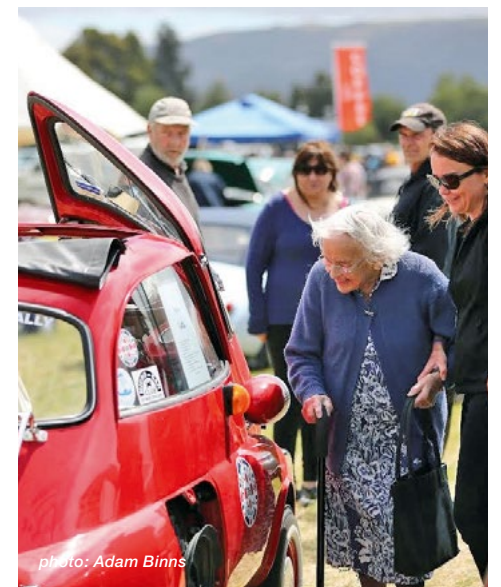


photo: Adam Binns

## TREASURING WHENUA CONNECTIONS

A film focused on exploring the spiritual dimensions of whakapapa and whenua connections is the focus of the Purakaunui Block's second film project. Purakaunui Block Incorporated is the legal entity for the management of a block of Maori Reserve Land at Purakaunui, set up in 1973 by the Maori



Land Court. The Otago Community Trust was thrilled to be able to provide funding support for this unique heritage film.

Previously the Purakaunui Block raised funds to produce a film capturing the history of the Purakaunui Block Inc and significant historical and archaeological events in the district - Purakaunui, Long Beach, Whareakeake and Kaikai's Beach. This second film builds upon the work completed and captures the spiritual essence that is an important part of people - the ira atua.

Spokesperson Nicola Taylor explains that "Exploration of the spiritual world of Maori and of Ngai Tahu becomes possible once the historical framework is understood. This project will assist future generations to gain a better understanding of the cultural significance of the whenua they are part of. The film will be part of a set that provides the whanau with the complete understanding and visual reminder of who they are and how they connect into the wider Ngai Tahu whanau".

The 2016 Festival of Historic Motoring was held in Dunedin in January from the 15th to the 26th. This was the 10th International Rally held by the Vintage Car Club of New Zealand Inc. The Otago Community Trust was pleased to offer support for the Festival. Event organisers did an outstanding job of showcasing the wonderful array of historic vehicles and motorbikes across the different rally routes of Balclutha, Middelmarsh, Lawrence and Waikouaiti and also at the very popular Wings and Wheels open day.

With over 600 vehicles on display across six different vintage groups (alongside a number of vintage motorcycles), the event truly did a terrific job of illustrating the passion and history of historic motoring and a bygone era. "A critical factor in the Festival's success was the wider community support and the volunteers that assisted throughout the duration of the Festival" said rally director Nicola Wilkinson.

## ENVIRONMENTAL EDUCATION

Ravensbourne School in Dunedin was just one of the Otago schools that benefited from ongoing funding from Otago Community Trust for the Paper4trees programme. Environmental Education for Resource Sustainability Trust (EERST) established the Paper4trees programme in 2001 providing schools and preschools with the resources and equipment needed to set up and maintain their own in-house recycling systems.

Paper4trees National Manager, Hope Lawson said "Ravensbourne School

in Dunedin received five native trees from EERST last year thanks to Otago Community Trust funding. It was a delight to see Manuela Araujo and Erin Cade helping their school caretaker plant the trees".

EERST rewards schools with 1 native plant for every two cubic metres of paper/cardboard they recycle. Currently over 3340 schools/preschools throughout NZ are participating in Paper4trees.



photo: Ravensbourne School in Dunedin



for more stories visit [oct.org.nz](http://oct.org.nz)

### DONATIONS

Basil Hooper Project Group	1,000
Central Otago Wilding	
Conifer Control Group	10,000
Cromwell Museum Trust	2,678
Dunedin Chinese Garden Trust	20,000
Dunedin Prison Charitable Trust	90,000
Environmental Education for Resource Sustainability Trust	3,500

Friends of Alps 2 Ocean Incorporated	304,000
Historic Places Central Otago	500
International Festival of Historic Motoring	40,000
Janet Frame Eden Street Trust	2,500
Jolendale Park Charitable Trust	7,000
Lawrence Chinese Camp Charitable Trust	5,500
Natural Heritage Society of Oamaru Inc	630
Nicol's Blacksmith Historic Trust	4,600
Oamaru Repertory Society Inc	8,700

Oamaru Victorian Heritage Celebrations Committee	8,000
Otago Fish & Game Council	2,000
Otago Heritage Bus Society Incorporated	3,000
Otago Settlers Assn	2,000
Purakaunui Block Inc	6,000
Routeburn Dart Wildlife Trust	2,000
Shag Point Ratepayers Assoc	1,200
St Patricks of South Dunedin	100,000

Te Kakano Aotearoa Trust	7,500
Teviot Valley 2007 Soc Inc	7,000
The Oamaru Whitestone Civic Trust	8,500
Theomin Gallery Trust	6,000
Upper Clutha Historical Records Society	1,100
Warbirds Over Wanaka Community Trust	10,000
Yellow-Eyed Penguin Trust	1,300

**666,208**



SUMMARY CONSOLIDATED FINANCIAL STATEMENTS
For the Year Ended 31 March 2016

SUMMARY STATEMENT OF COMPREHENSIVE REVENUE AND EXPENSE
For the year ended 31 March 2016

Table with 3 columns: Description, 2016 (\$000's), 2015 (\$000's). Rows include Revenue, Expenditure, Surplus before donations, Donations approved during the year, Surplus before taxation, Income tax (expense)/refund, Surplus for the year, Other comprehensive revenue and expenses, and Total comprehensive revenue and expenses for the year.

SUMMARY STATEMENT OF CHANGES IN TRUST FUNDS
For the year ended 31 March 2016

Table with 3 columns: Description, 2016 (\$000's), 2015 (\$000's). Rows include Total trust funds at the beginning of the year, Plus total comprehensive revenue and expenses for the year, and Total trust funds at the end of the year.

SUMMARY STATEMENT OF FINANCIAL POSITION
As at 31 March 2016

Table with 3 columns: Description, 2016 (\$000's), 2015 (\$000's). Rows are categorized into Assets (Cash and cash equivalents, Other current assets, Total non-current assets, Other investments, Property, plant and equipment, Other non-current assets, Total current assets, Total assets) and Liabilities (Trade and other payables, Total current liabilities, Deferred tax liability, Total non-current liabilities, Total liabilities, Net assets).

Approved on behalf of the Trustees:

Handwritten signatures of Chairperson and Trustee, dated 28 June 2016.

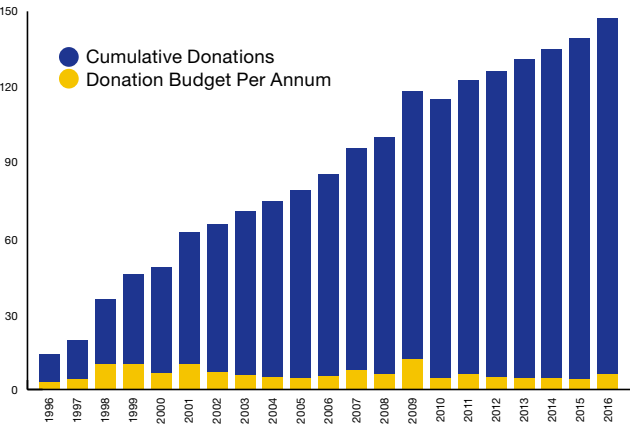
SUMMARY STATEMENT OF CASH FLOWS
For the year ended 31 March 2016

Table with 3 columns: Description, 2016 (\$000's), 2015 (\$000's). Rows include Net cash outflow from operating activities, Net Cash from/(used) in investing activities, Net cash from/(used) in financing activities, Net (decrease)/increase in cash and cash equivalents, Cash and cash equivalents at 1 April, and Cash and cash equivalents at 31 March.

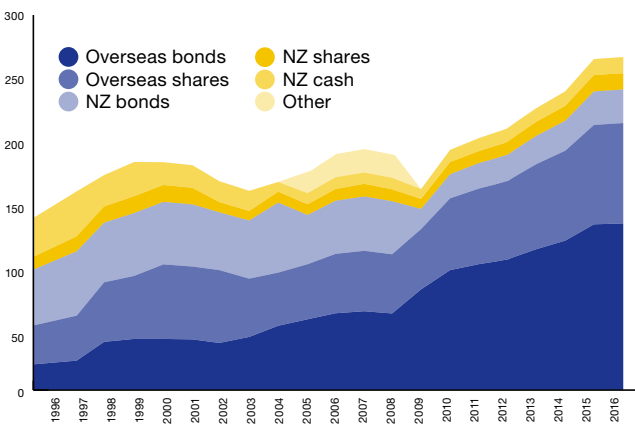


2016 Trustees: Back Row (L to R) Kate Hazlitt, Peter Chin, John Wilson, Colin Jackson, Stephen Kornyei (Deputy Chairperson), Lauren Semple, Gina Huakau. Front Row (L to R) Susie Johnstone, Barbara Bridger (Chief Executive), Ross McRobie (Chairperson), Pip Laufiso, Helen Webster.

CUMULATIVE & ANNUAL DONATIONS



FUNDS UNDER MANAGEMENT



NOTES TO THE SUMMARY FINANCIAL STATEMENTS
For the year ended 31 March 2016

These are the summary financial statements of Otago Community Trust (the "Trust") for the year ended 31 March 2016. The specific disclosures included in these summary financial statements have been extracted from the full annual financial statements dated 28 June 2016. The full annual financial statements dated 28 June 2016 have been prepared in accordance with Tier 2 Public Benefit Entity (PBE) Financial Reporting Standards as issued by the New Zealand External Reporting Board (XRB). They comply with New Zealand Equivalents to International Public Sector Accounting Standards Reduced Disclosure Regime (NZ IPSAS with RDR) and other applicable Financial Reporting Standards as appropriate to Public Benefit Entities. This summary financial report cannot be expected to provide as complete an understanding as provided by the full financial statement of the financial performance, financial position and cash flows of the Trust. An unqualified audit opinion has been received on the full financial statements for the year ended 31 March 2016. A copy of the full Trust financial statements for the year ended 31 March 2016 may be obtained by contacting the Trust on (03) 479 0994 or by visiting the Trust's website www.oct.org.nz. This summary financial report has been examined by our auditor for consistency with the full financial statement. An unqualified audit opinion has been received. These summary financial statements were approved for issue by the Trustees on 28 June 2016.

Basis of preparation
Otago Community Trust is a public benefit entity and was incorporated as a Charitable Trust in accordance with the provisions of the Community Trusts Act 1999. These are the summary consolidated financial statements of Otago Community Trust and its wholly owned subsidiary Fillmor House Limited and they comply with PBE FRS 43: Summary Financial Statements. The presentation currency is New Zealand dollars, rounded to the nearest thousand dollars. The full consolidated financial statements upon which these Summary Financial Statements are based, have been prepared to comply with the Accounting Standards Framework for Public Benefit Entities and the Financial Reporting Act 2013. Specific accounting policies
All specific accounting policies have been applied on the same bases as those used in the full consolidated financial statements of the Trust. Changes in accounting policies
The accounting policies have been applied consistently to all periods presented in these summary financial statements, there have been no changes in accounting policies during the year.

Deloitte.
REPORT OF THE INDEPENDENT AUDITOR ON THE SUMMARY FINANCIAL STATEMENTS
TO THE TRUSTEES OF OTAGO COMMUNITY TRUST

The accompanying summary financial statements of Otago Community Trust and its subsidiaries ('the Group') on page 8, which comprise the summary consolidated statement of financial position as at 31 March 2016, and the summary consolidated statement of revenue and expense, summary consolidated statement of changes in trust funds and summary consolidated statement of cash flows for the year then ended, and related notes, are derived from the audited consolidated financial statements of the Group for the year ended 31 March 2016. We expressed an unmodified audit opinion on those consolidated financial statements in our report dated 28 June 2016. The summary financial statements do not contain all the disclosures required for full consolidated financial statements under Public Benefit Entity Standards Reduced Disclosure Regime. Reading the summary financial statements, therefore, is not a substitute for reading the audited consolidated financial statements of the Group. This report is made solely to the Trustees, as a body, for the purpose of expressing an opinion on the summary financial statements for the year ended 31 March 2016. Our audit has been undertaken so that we might state to the Trustees those matters we are required to state to them in an auditor's report on summary financial statements and for no other purpose. To the fullest extent permitted by law, we do not accept or assume responsibility to anyone other than the Trustees as a body, for our audit work, for this report, or for the opinions we have formed.

Directors' Responsibility for the Summary Financial Statements
The Directors are responsible on behalf of the company for the preparation of a summary of the audited consolidated financial statements, in accordance with FRS-43: Summary Financial Statements. Auditor's Responsibility
Our responsibility is to express an opinion on the summary financial statements based on our procedures, which were conducted in accordance with International Standards on Auditing (New Zealand) (ISA (NZ)) 810: Engagements to Report on Summary Financial Statements. Other than in our capacity as auditor and the provision of human resources and advisory services, we have no relationship with or interests in Otago Community Trust or any of its subsidiaries. These services have not impaired our independence as auditor of the Trust and Group. Opinion
In our opinion, the summary financial statements derived from the audited consolidated financial statements of the Otago Community Trust and its subsidiaries for the year ended 31 March 2016 are consistent, in all material respects, with those financial statements, in accordance with FRS-43: Summary Financial Statements. Deloitte Chartered Accountants 28 June 2016 Dunedin, New Zealand