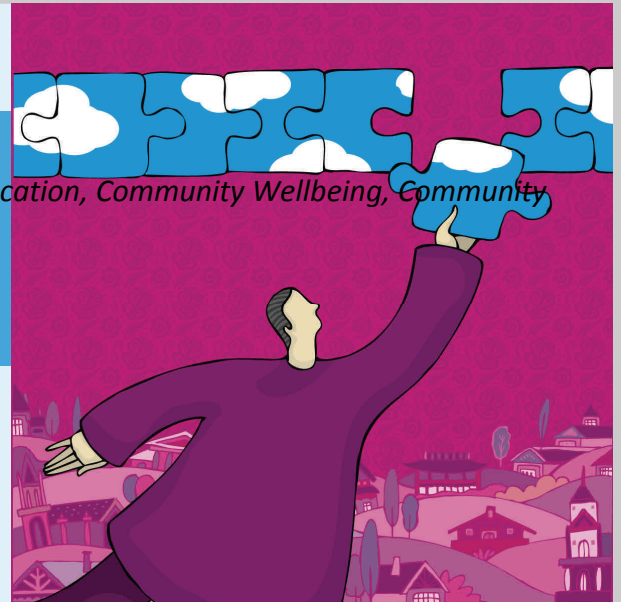


What we support.....Art & Culture, **Environment**, Heritage, Education, Community Wellbeing, Community Activity, Events and Sport & Recreation.

ENVIRONMENT

Otago is renowned for its natural environment. The Otago Community Trust supports the protection and conservation of this unique environment, including flora, fauna and areas of indigenous biodiversity. A healthy and sustainable local environment will have positive affects for the community today as well as future generations.



Our Support

The Trust supports community based groups who work to protect the local environment, provide community education and information, improve responsible access to the environment and strengthen our local biodiversity.

Projects should have the support of volunteers and engage the wider community.

What We Provide Donations For

Our Priorities

- Protection & preservation of habitats and species;
- Supporting community education and engagement in environmental issues;
- Public access to the environment;
- The Trust has a particular interest in tracks and trails that support the National Cycle Trail Project.

Examples

- Projects that enable and encourage the community to appreciate the environment;
- Reintroduction of native flora and fauna;
- Conservation of critical habitats and ecosystems;
- Protection of rare, endangered or threatened species in their natural habitat;
- Increasing local sustainability;
- Tracks and trails;
- Volunteer expenses.

Applicants Include

- Education providers;
- Local Authorities;
- Incorporated Societies;
- Charitable Trusts;
- Unincorporated bodies.

How to Apply

Please complete the application form available from our website www.oct.org.nz

Larger Projects

For projects over \$25,000 you may need the following:

- Demonstration of how you have considered broader environmental issues and national policies;
- Community consultation;
- Co-ordination and support of volunteer effort;
- Support of local authorities and relevant Government departments.

What We Do Not Generally Fund

- Individuals;
- Commercial organisations;
- Travel to conferences, seminars, reunions, etc;
- Endowments or capital funds;
- Political parties or lobby groups;
- Projects considered to be the responsibility of central or local Government;
- Repayment of debt;
- Retrospective costs;
- Core operational expenses;
- Non-native animal rescue;
- Consultants research.

The Trust is not a principal funder of projects. It expects that the applicant will raise a significant proportion of the project cost elsewhere.

Staff at the Trust are happy to answer any questions you may have. If you do, we recommend you contact us before filling out an application.

Tel: 03 479 0994 or **Toll Free:** 0800 10 12 40

Email: info@oct.org.nz **Web:** www.oct.org.nz

Level 2, Community Trust House
Corner Moray Place & Filleul Street
P O Box 5751, Dunedin 9058